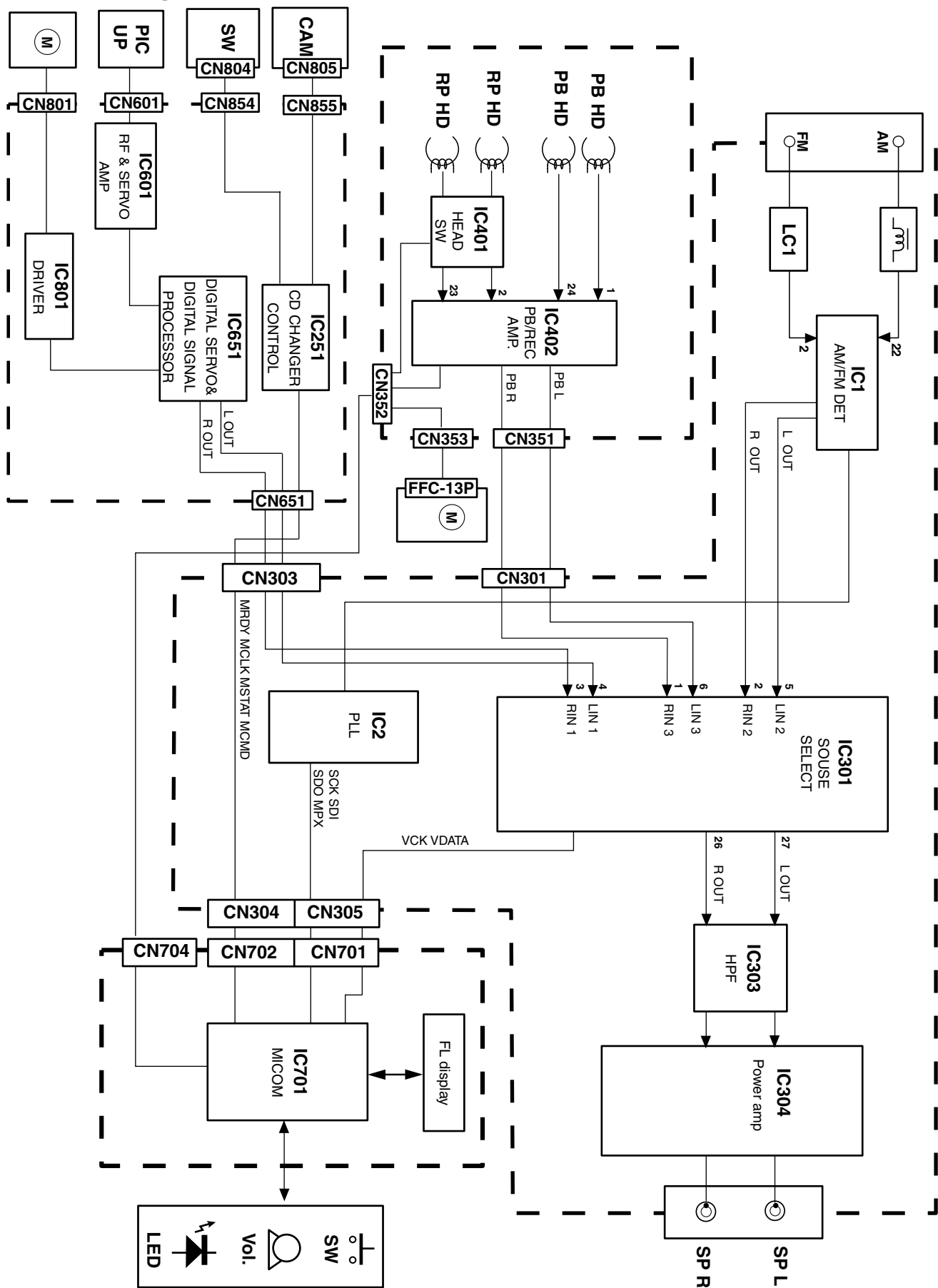


Block diagram



Standard schematic diagrams

■ Power Transformer section

7

6

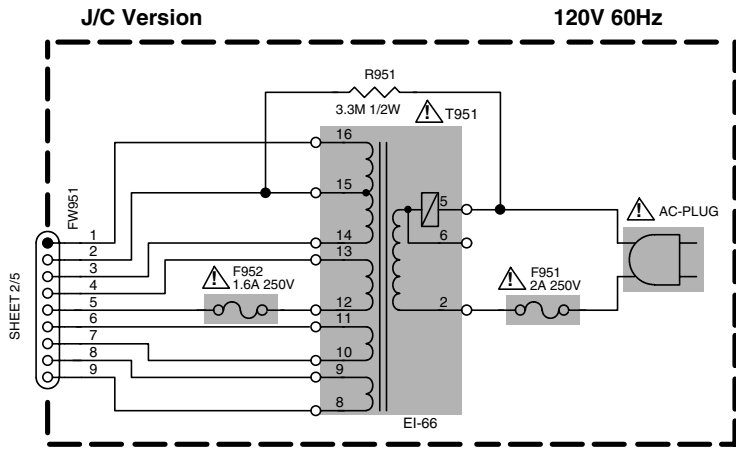
5

4

3

2

1

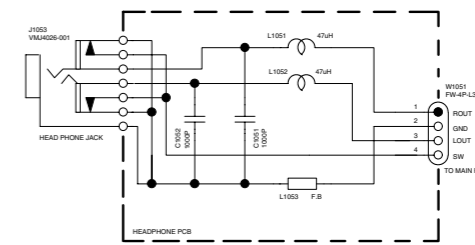
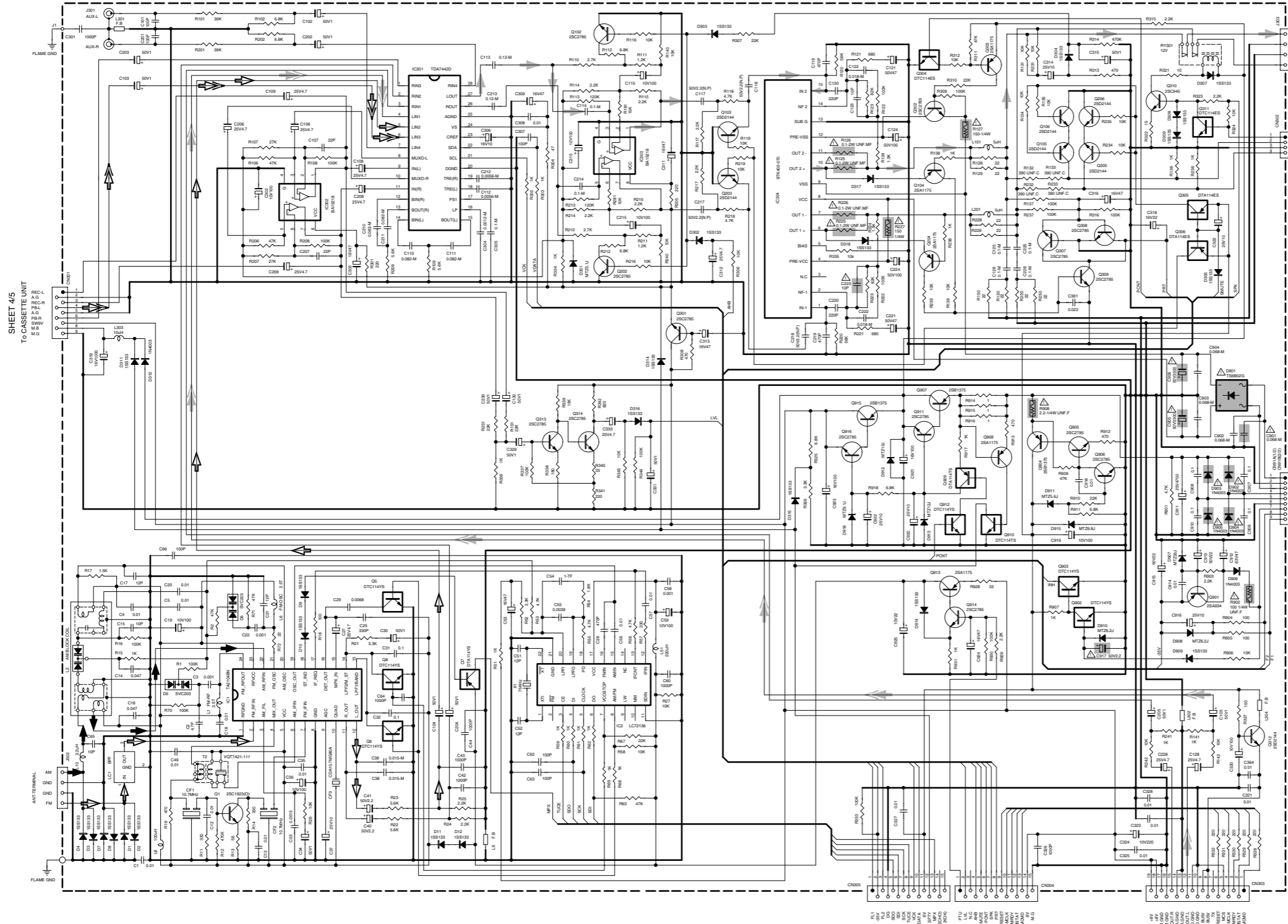


■ ⚠ Parts are safety assurance parts.
When replacing those parts make
sure to use the specified.

SHEET 1/5

Main section

Headphone section



- CD signal
- TAPE P.B. signal
- FM/TUNER signal
- MAIN signal
- AM signal

⚠ Parts are safety assurance parts. When replacing those parts make sure to use the specified.

SHEET 4/5
To CASSETTE UNIT

To HEADPHONE
SHEET 1/5

To CTRL P.C BOARD SHEET 3/5

To CTRL P.C BOARD SHEET 3/5

To CD UNIT SHEET 5/5

Control section

SHEET 2/5
TO MAIN PWB

SHEET 2/5
TO MAIN PWB

SHEET 2/5
TO MAIN PWB

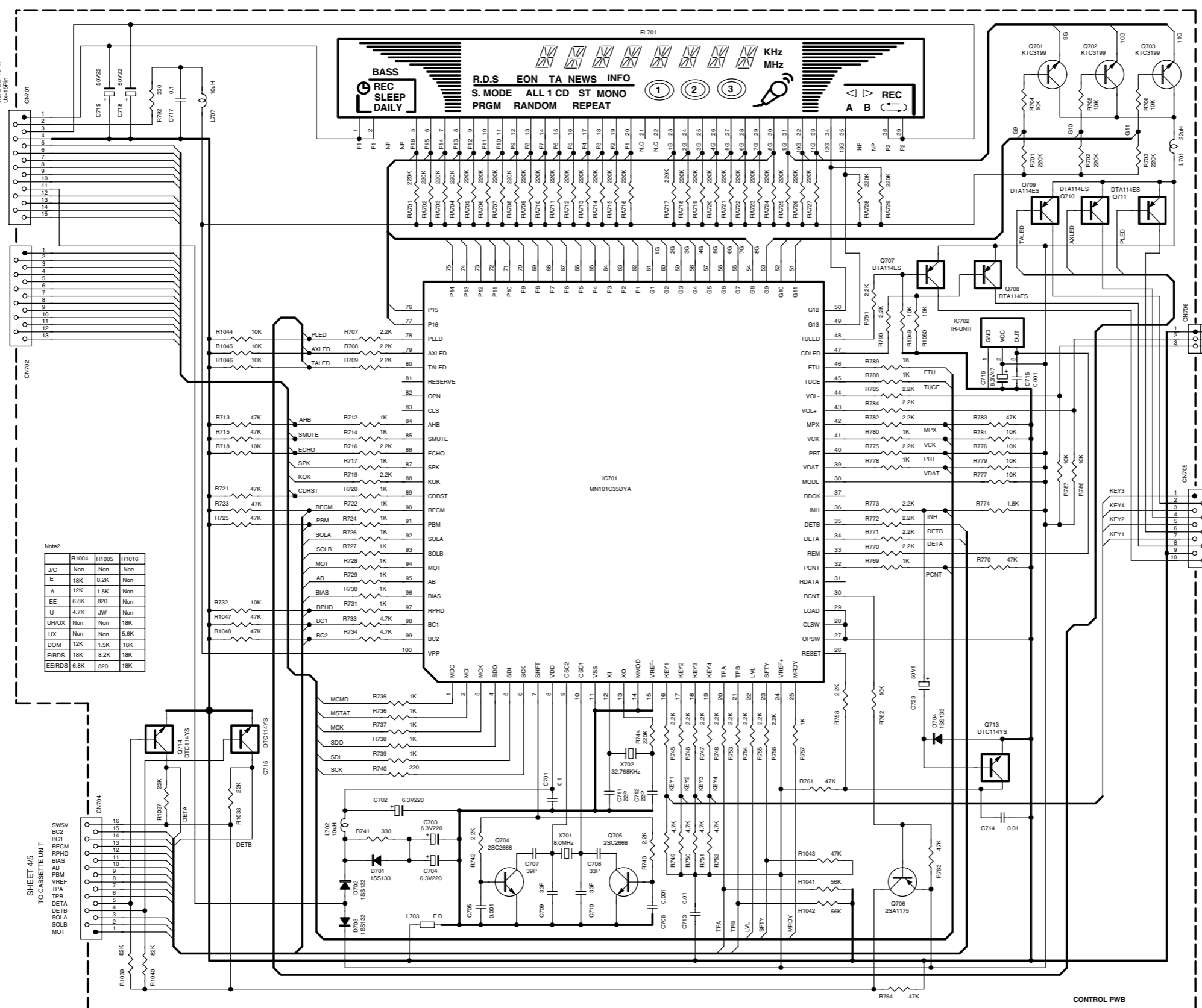
SHEET 2/5
TO MAIN PWB

SHEET 2/5
TO MAIN PWB

SHEET 2/5
TO MAIN PWB

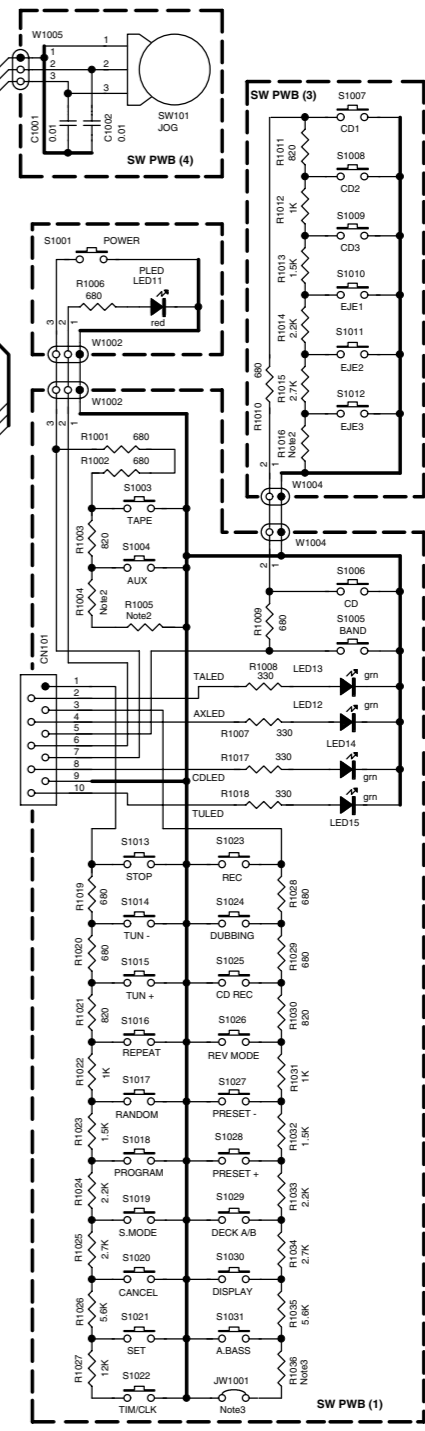
SHEET 2/5
TO MAIN PWB

SHEET 2/5
TO MAIN PWB



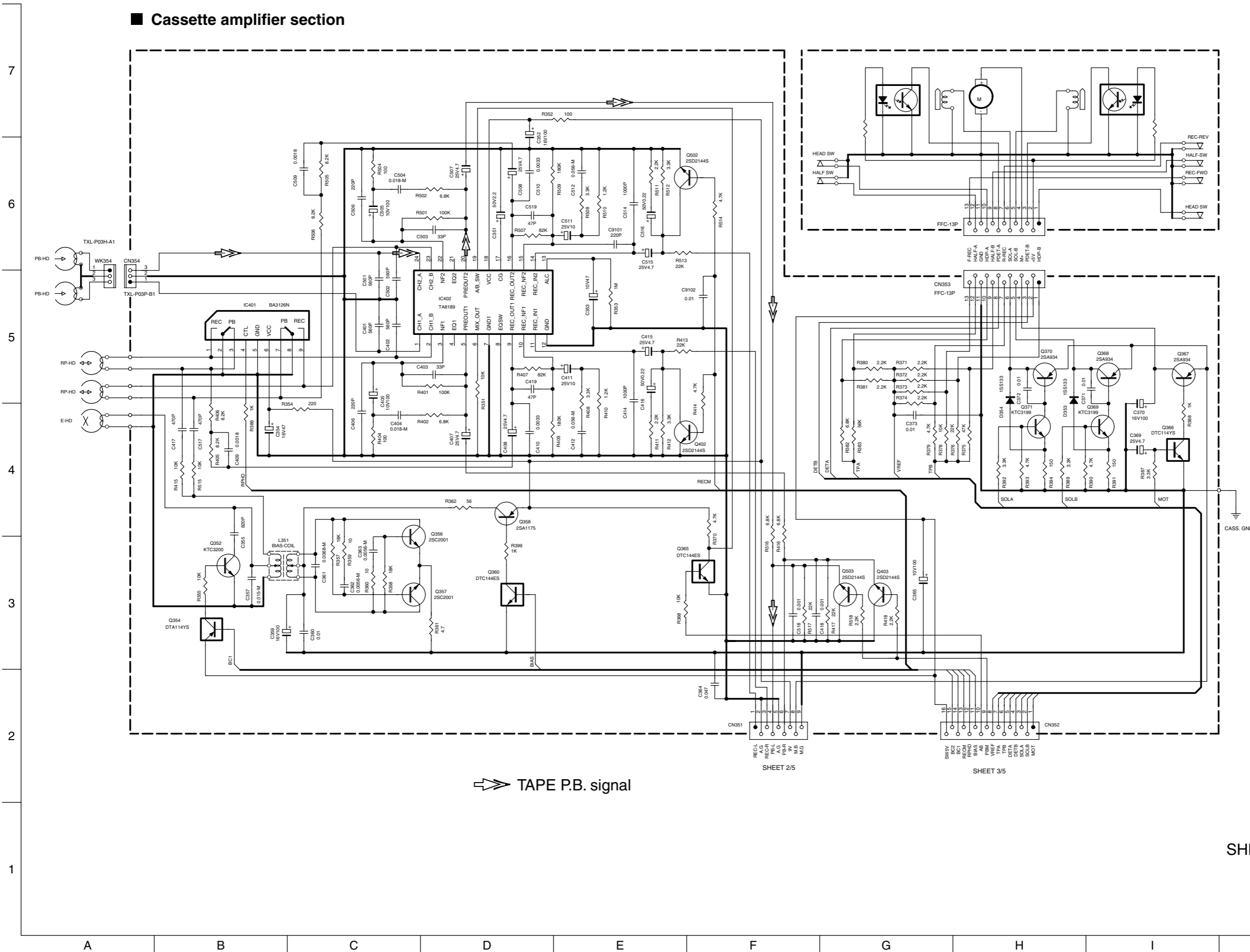
Note2

J/C	R1004	R1005	R1016
E	18K	8.2K	Non
A	12K	1.5K	Non
EE	6.8K	820	Non
U	4.7K	JW	Non
UR/UX	Non	Non	18K
LUX	Non	Non	5.6K
DOM	12K	1.5K	18K
ER/RDS	18K	8.2K	18K
EE/RDS	6.8K	820	18K



Note3: Display Test
All Segments of FL is turn On.
All LED is Flashing.
Use only PWB check R1036/JW1001-Non

Cassette amplifier section



⇨⇨ TAPE P.B. signal

SHEET 2/5

SHEET 3/5

SHEET 4/5

CD Servo & CD Mechanism control section

7

6

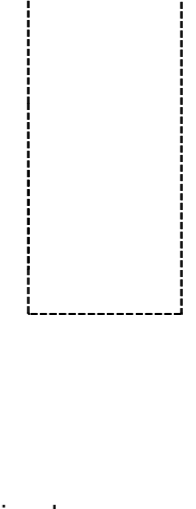
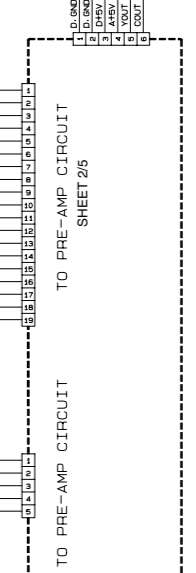
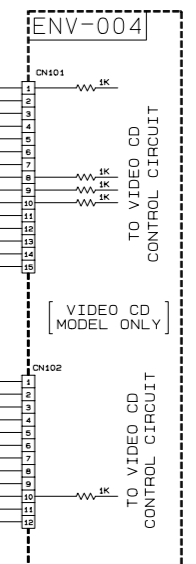
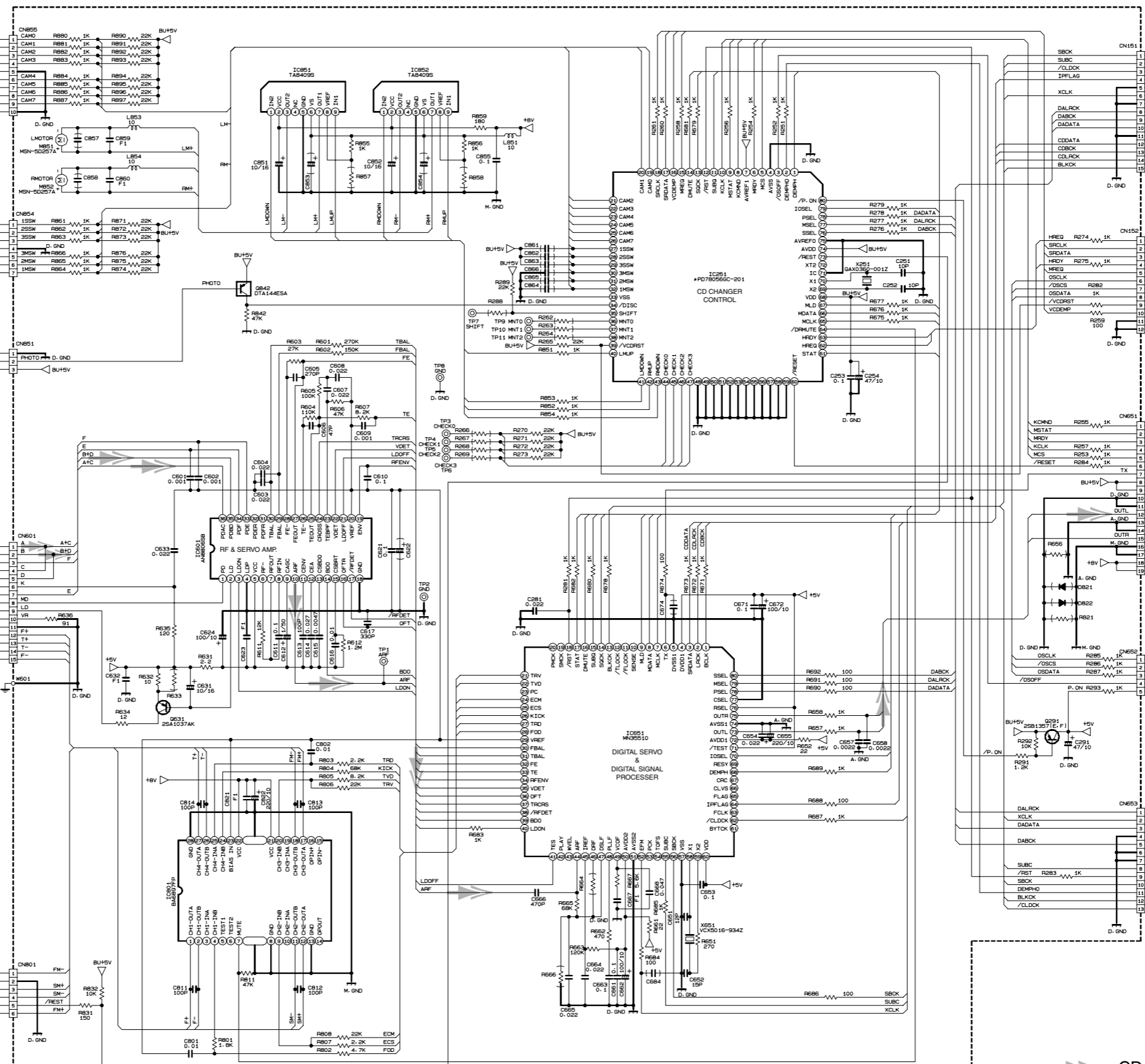
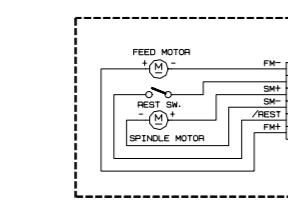
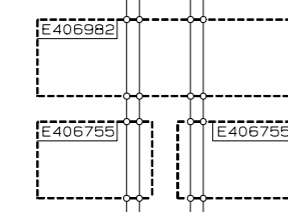
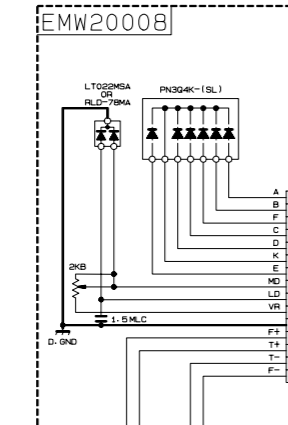
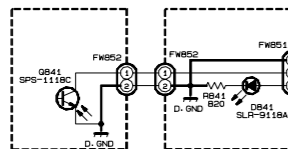
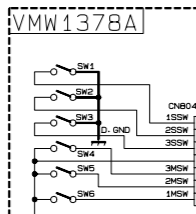
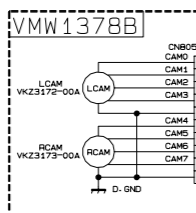
5

4

3

2

1



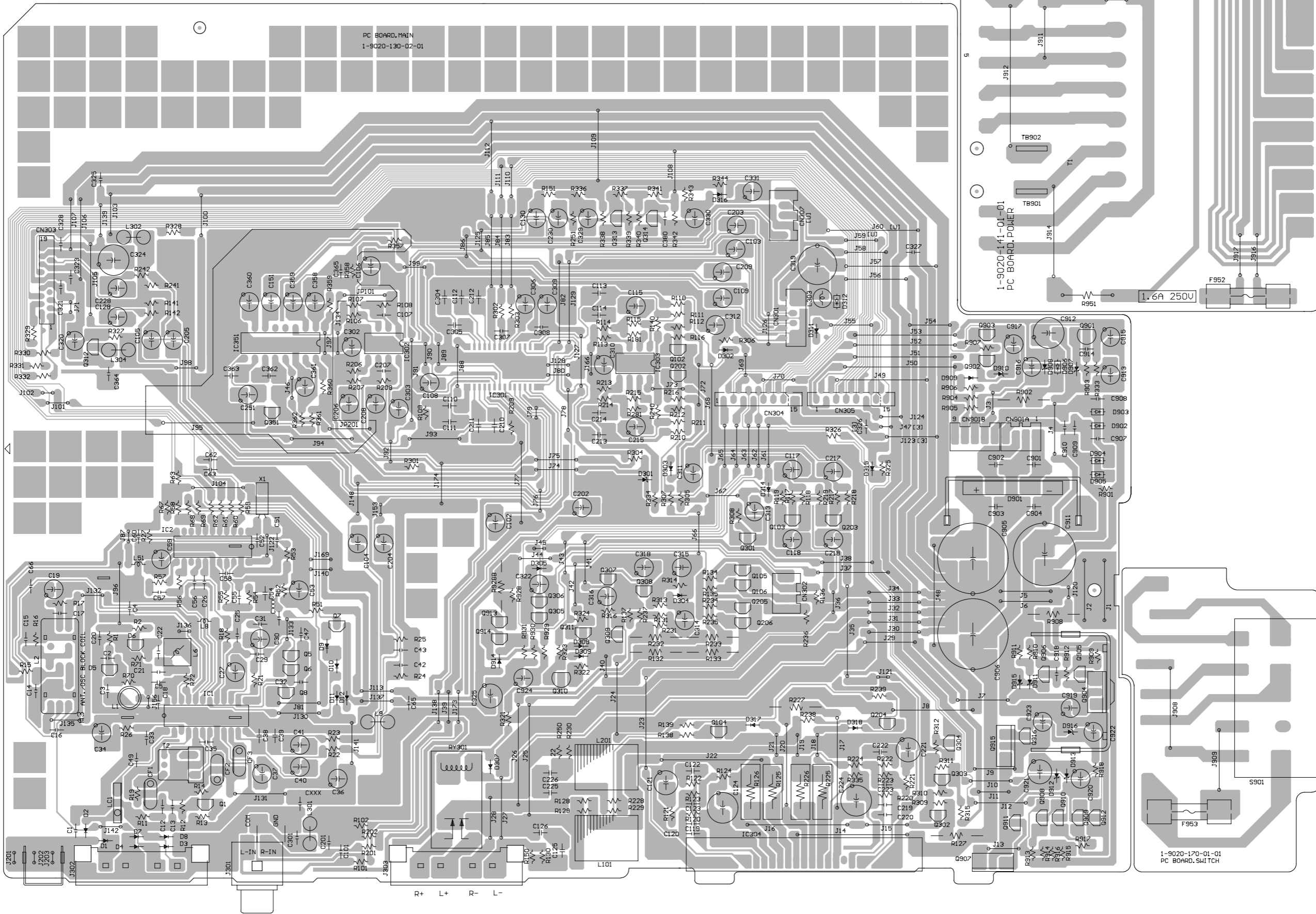
CD signal

EMW10729

Printed circuit boards

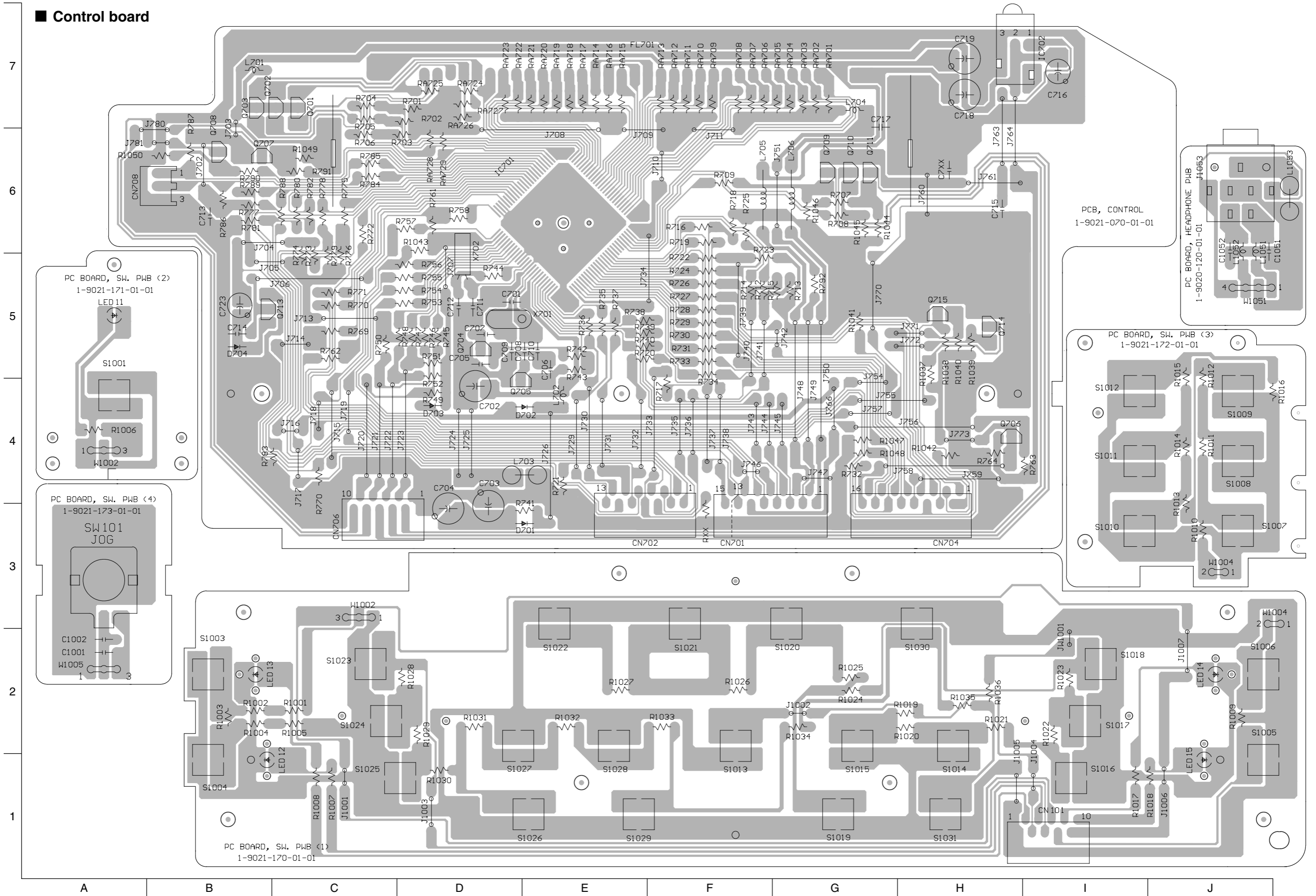
■ Main board

7
6
5
4
3
2
1

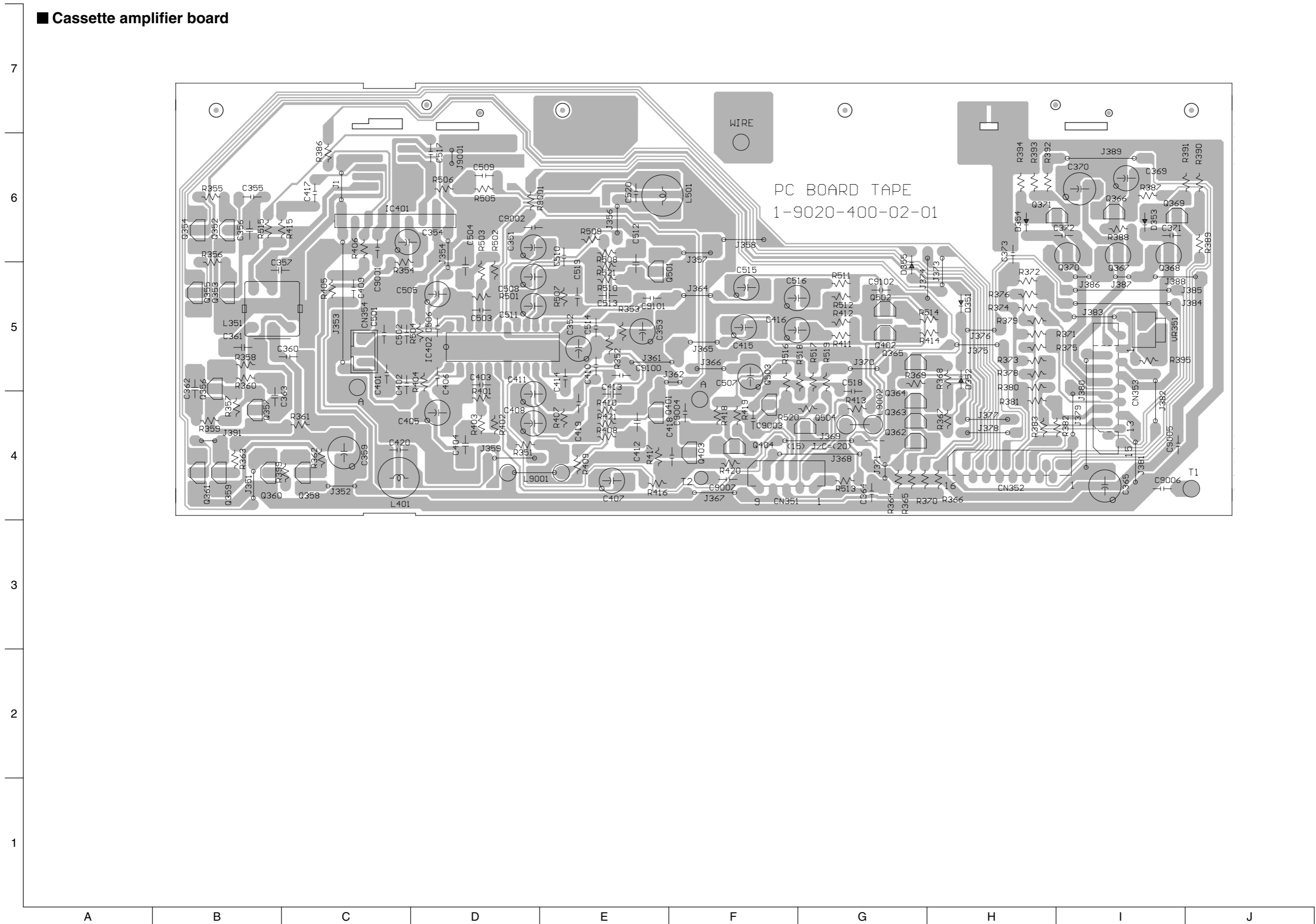


A B C D E F G H I J

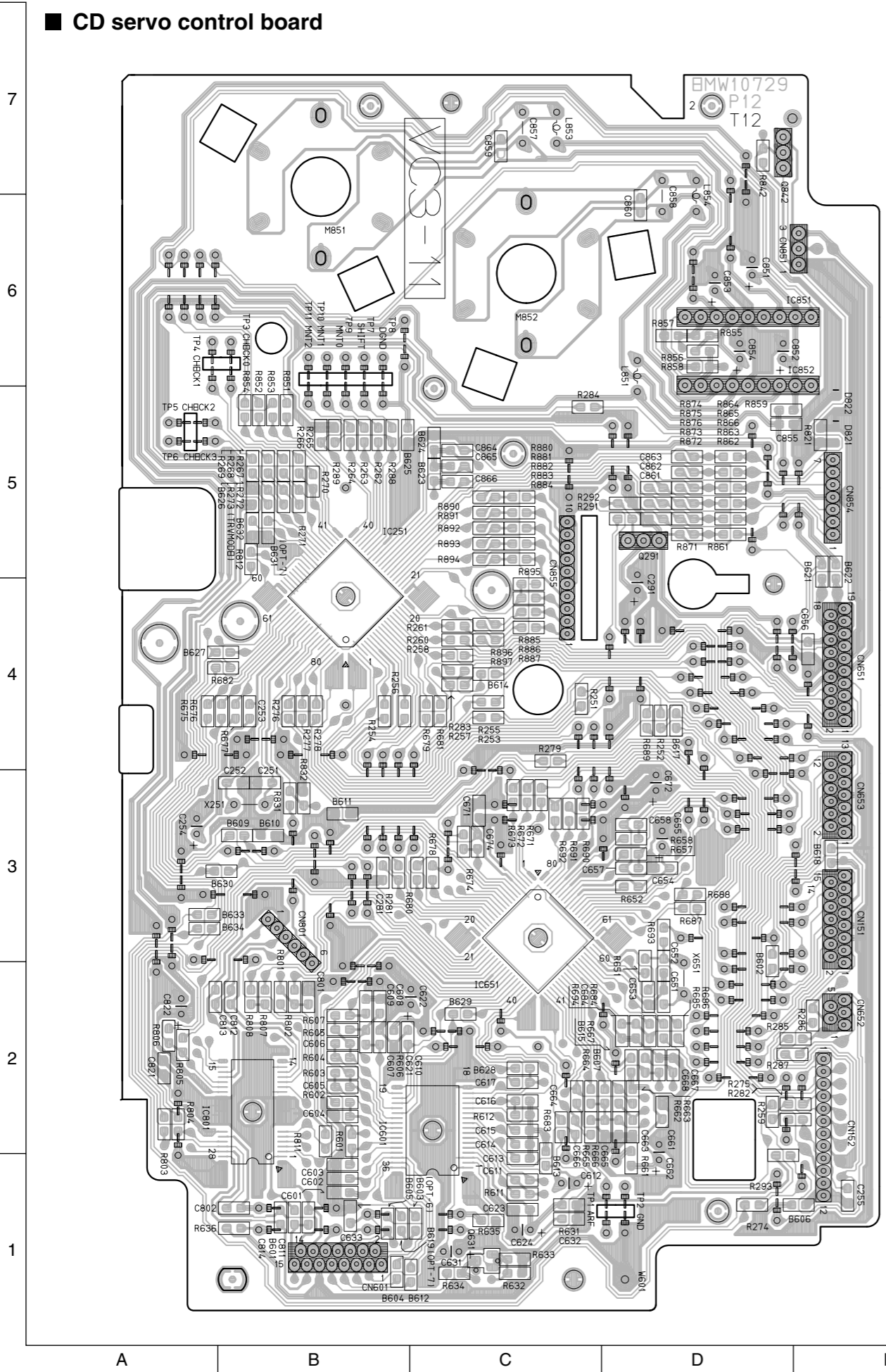
■ Control board



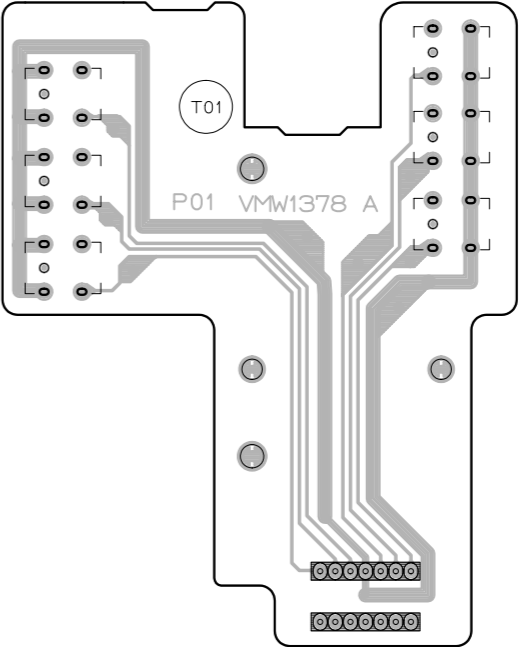
■ Cassette amplifier board



■ CD servo control board



■ CD Tray section switch board



■ Cam switch board

